

Polarization Extinction Ratio Meter PEM-320

The PEM-320 polarization extinction ratio (PER) meter has been designed to enable accurate and rapid alignment of optical components to polarization maintaining fiber. The PEM-320 incorporates a powerful GPIB interface enabling full system integration and production line automation. In addition, to facilitate automatic alignment of diode lasers to optical fibers, an analog power monitor with 1 kHz response time is available. With this addition, both translational and rotational fiber alignment can be controlled automatically.



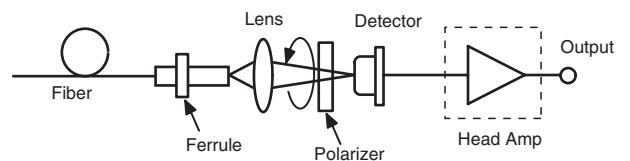
Features

- ▶ Simultaneous display of extinction ratio, optical power, and polarization angle
- ▶ 40 dB dynamic range for PER measurement
- ▶ Wide dynamic range for input power (-30 to +10 dBm)
- ▶ Analog output
- ▶ GPIB and RS-232C interface
- ▶ Real-time (up to 10Hz) update rate
- ▶ Selectable FC/SC or LC/MU or ST connector interface
- ▶ Angle-polish option available
- ▶ Utility software (for controlling instrument and acquiring/storing data) included
- ▶ Broadband and narrowband source measurements
- ▶ 1550, 1480, 1310, 980 nm versions available
- ▶ PER measurement available at the fixed two axis. (0° and 90°)

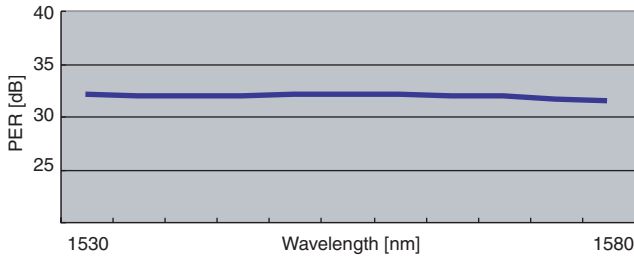
Applications

- ▶ Alignment of polarization axis
- ▶ PMF code with connector valuation

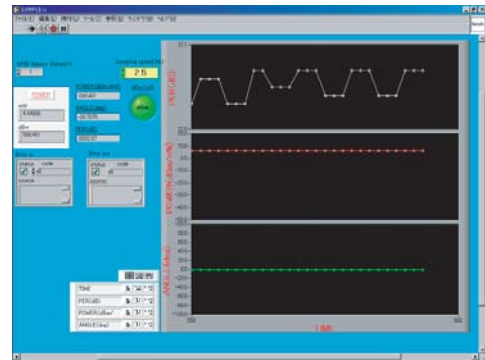
Principle of Operation



Wavelength Dependency of Measurement Extinction



LabView Software Support



Specifications

Parameter	Unit	Spec		
Wavelength Range	nm	1310	1480	1550
PER Range	dB	0 - 30 (when input power > -30 dBm) 30 - 40 (when input power > -20 dBm)		
PER Resolution	dB	0.1 (when PER < 30 dB) 0.3 (when PER > 30 dB)		
Power Measurement	dBm	-30 - +10		
Power Resolution	dB	0.1 (when Power > -30 dBm) 0.3 (when Power < -30 dBm)		
Polarization Angle Resolution	deg	0.45		
Measurement Speed	sec	0.1, 0.2, 0.4 (selectable)		
Operating Temperature	°C	25 ± 5		
Connector Type	-	FC, SC (SPC/APC)		
Communication Interface	-	GPIB, RS-232C		
Size	mm	210 x 80 x 300		
Weight	kg	3		
Supply Voltage	V	100-240		
Maximum Power	W	40		

Ordering Code

PEM-320-A-B-C-D-E

- E : Analog Through : **0** : None / **T** : Direct PD analog output
- D : Power Input : **0** : (-30 - +10dBm)
- C : Connector Polish : **S** : SPC / **A** : APC
- B : Connector Type : **F** : FC/SC (Rtype-FC available)
- A : Waverrange : **1** : 1550nm range / **2** : 1480nm range / **3** : 1310nm range

www.santec.com E-Mail : sales@santec.com

2002 © SANTEC CORPORATION Santec reserves the right to make changes in equipment design, components or specifications without notices.



SANTEC CORPORATION
5823 Ohkusa-Nenjyozaka, Komaki, Aichi 485-0802, Japan Tel. +81-568-79-1959 Fax +81-568-79-1718

SANTEC U.S.A. CORPORATION
433 Hackensack Ave., Hackensack, NJ, 07601, U.S.A. Toll Free +1-800-726-8321 (santec-1) Tel. +1-201-488-5505 Fax +1-201-488-7702

SANTEC EUROPE LIMITED
Magdalen Centre, Robert Robinson Ave., The Oxford Science Park, Oxford OX4 4GA, U.K. Tel. +44-1865-784960 Fax +44-1865-784961

SANTEC (SHANGHAI) Co., Ltd.
No.800 Zhangyang Road Changhang Tower, Pudong District, Shanghai 200122 China Tel: +86-21-58361261, +86-21-58361262 Fax: +86-21-58361263