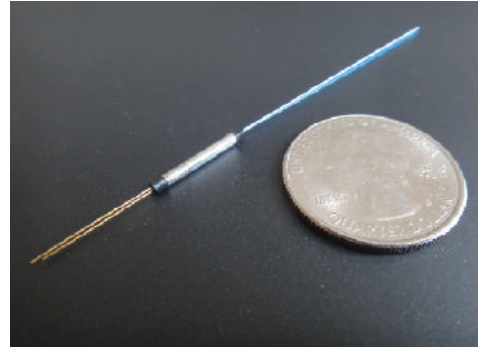


# Ultimate Tap Photo Detector UTP-1

SANTEC's UTP is a single high directivity uni-directional tap photodetector and it is the Ultra-Compact size. SANTEC achieve 78% reduction of the volume, compared to uni-directional MTP-1. It can reduce customer module footprint while increasing design capability.

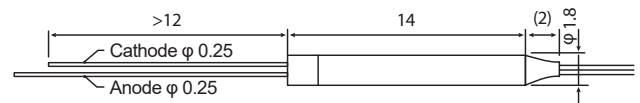
SANTEC's tap photodetector series are excellent for high-density integration in next generation small form factor packages matching CFP, CFP2 and CFP8.



## Features

- ▶ Ultra-Compact Size
- ▶ Excellent Characteristics
- ▶ Telcordia GR-468 Qualified
- ▶ RoHS Compliant
- ▶ Pin Bending is available
- ▶ Minimum Fiber Bending Radius of 5mm is available

## Dimensions



Unit: mm

## Specifications

Parameter	Unit		Type				Notes
			S1	S2	S5	S9	
Tap ratio	Typ.	%	1	2	5	10	-
Insertion loss	Max.	dB	0.6	0.7	1.15	1.7	w/o connectors
Return Loss	Min.	dB	45				-
PD sensitivity	-	mA/W	8 to 20	14 to 24	40 to 70	70 to 120	All operating conditions, 5V Bias
Dark Current	Max.	nA	2				75 degC, 5V Bias
Directivity	Min.	dB	33				-
Wavelength Range	-	nm	1510 to 1610				-
Storage Temperature	-	degC	-40 to 85				Non condensation
Operating Temperature	-	degC	-5 to 75				Non condensation
ESD	Max.	V	250				H.B.M.
Input Optical Power	Max.	dBm	+24	+21	+17	+14	-
Dimension (WxDxH)	-	mm	1.8(D) x 14(L)				-

www.santec.com

2023© santec AOC corporation santec reserves the right to make changes in equipment design, components or specifications without notice.



**Santec Japan Corporation**  
5823 Ohkusa-Nenjozaka, Komaki, Aichi 485-0802, Japan Tel. +81-568-79-3536 Fax +81-568-79-1718

**Santec USA Corporation**  
433 Hackensack Avenue Hackensack, NJ 07601, USA Toll Free +1-800-726-8321(santec-1) Tel. +1-201-488-5505 Fax +1-201-488-7702

**Santec Europe Ltd.**  
99 Park Drive Milton Park, Abingdon Oxfordshire, OX14 4RY, U.K. Tel. +44-20-3176-1550

**Santec (Shanghai) Co., Ltd.**  
21F Room H, Hua Du Bldg., No.838 Zhangyang Road, Pudong District, Shanghai 200122 China Tel: +86-21-58361261, Fax: +86-21-58361263